

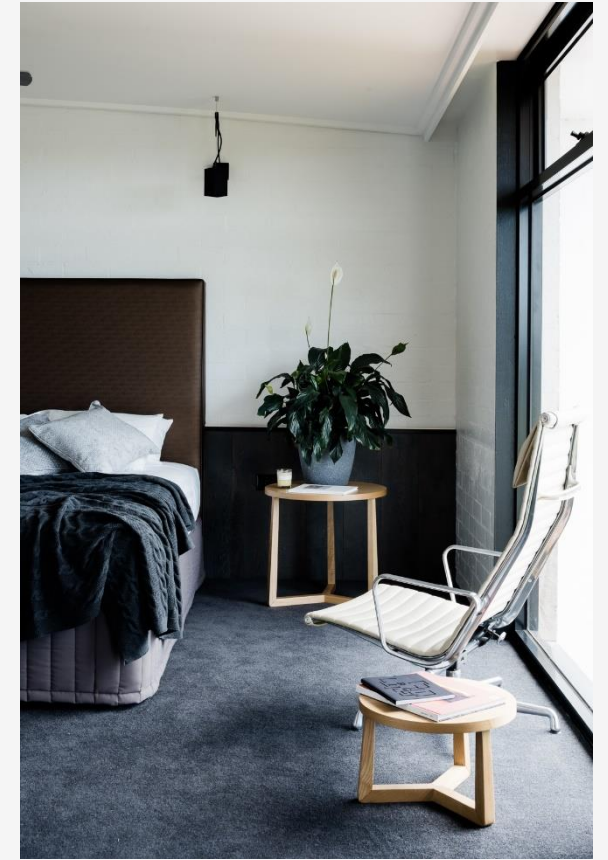


# WAURN PONDS ESTATE

CONFERENCES | EVENTS | ACCOMMODATION



# WELCOME

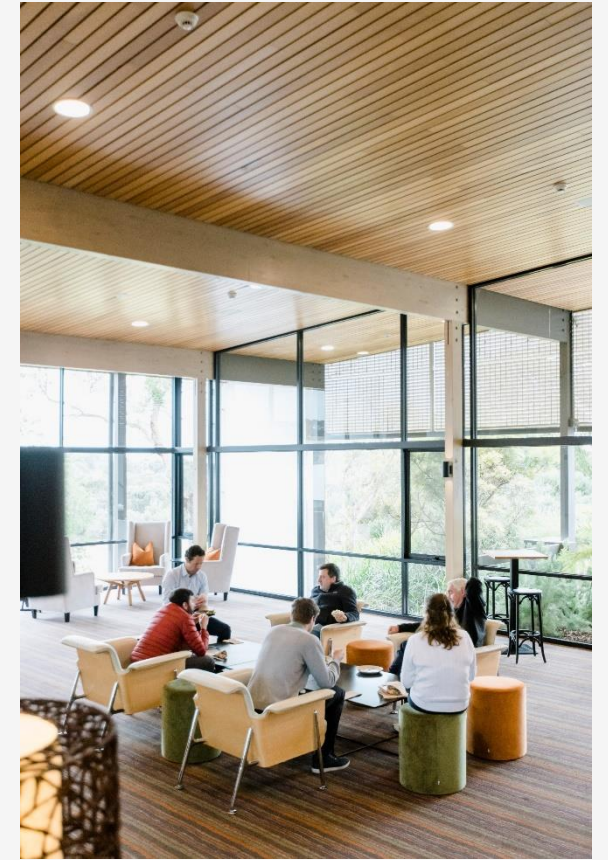


Waurm Ponds Estate is a boutique conference venue and hotel nestled amongst expansive grounds on the doorstep of the Great Ocean Road.

The Estate includes contemporary accommodation rooms, cutting edge conference spaces and a range of breakout areas, making it the ultimate venue for conferences and business events. Located only 20 minutes from the Geelong CBD and just over an hour to Melbourne, the Estate provides an escape from the hustle and bustle.

While you're here, enjoy a delicious lunch, relax by our infinity pool and spa, play a game of tennis, work out in the gym or take a stroll along one of our spectacular walking tracks.

# CONFERENCES



Waurm Ponds Estate offers technology rich facilities for your meetings, conferences and events. The eight conference spaces at the Estate all feature sweeping views through floor to ceiling windows and state of the art AV equipment. They can accommodate anywhere from 2 people for a meeting, up to 154 delegates theatre style. Along with the cutting-edge amenities provided, your meeting or conference can be fully supported by our campus IT specialists who are available to hire.

There are a range of breakout areas available, and the design of the Estate allows small groups to find a quiet place to collaborate, reflect and plan.





TORQUAY



ANGLESEA



BELLBRAE



DUNED

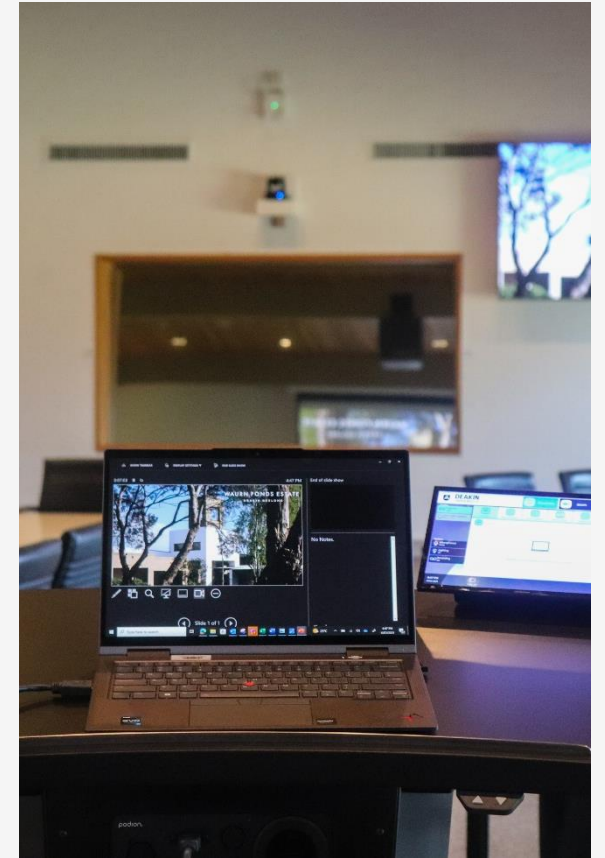
## CONFERENCE SPACES

# CONFERENCE CAPACITY

	AREA M <sup>2</sup>	CABARET	BOARDROOM	THEATRE	U-SHAPE	CLASSROOM
TORQUAY	198	80	26	154	34	48
ANGLESEA	90	30	16	60	22	24
BELLBRAE	37		10			
CERES	37		10			
DUNEED	56		16			
JAN JUC	37				12	
MORIAC	37				12	
PARAPARAP	62				18	



# AV

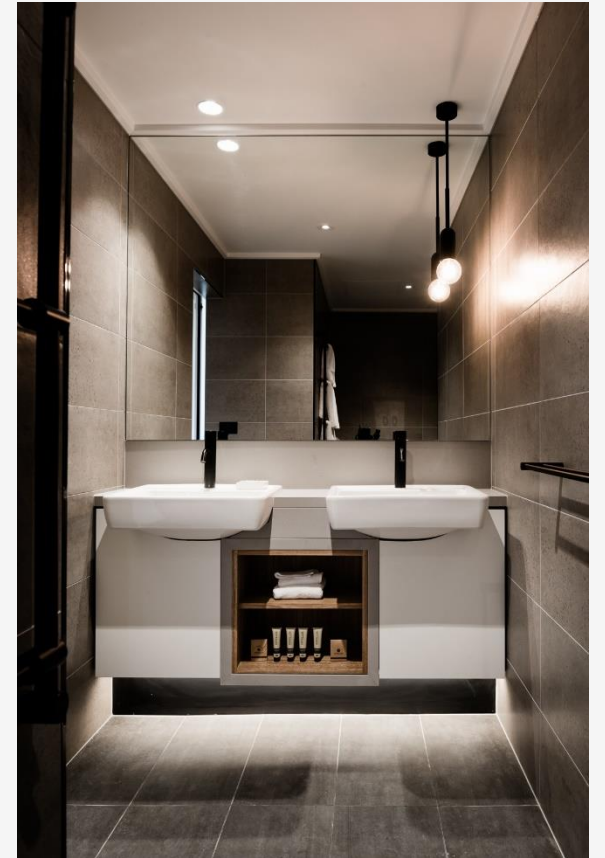


The Estate has recently updated our audio visual equipment to provide a seamless user experience.

The new AV equipment features one-touch operation, so you can plug your own laptop straight in. Our conference rooms also have an extra large projector screen that can be rolled back, and lectern with microphone as well as handheld, lapel and table microphones.

The spaces have built in cameras both at the front and rear of the rooms for ease of Zoom meetings, and we have recording capabilities and hearing loop devices available.

## ACCOMMODATION



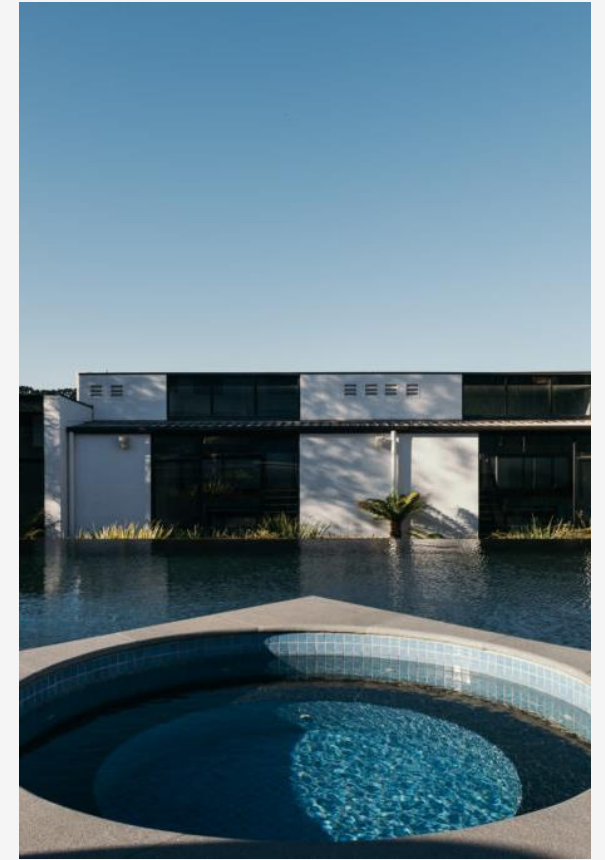
Unwind, reflect and relax in one of our 60 contemporary guest rooms which offer views overlooking the Estate's landscaped gardens and infinity pool.

Each room features a spacious king bed, fully renovated ensuite bathroom, crisp white bed linen, tea and coffee making facilities and luxury body products. Breakfast can be included in your booking.

Most of our rooms can be effortlessly transformed into twin-share accommodation, providing flexible arrangements to suit your needs.



## AMENITIES



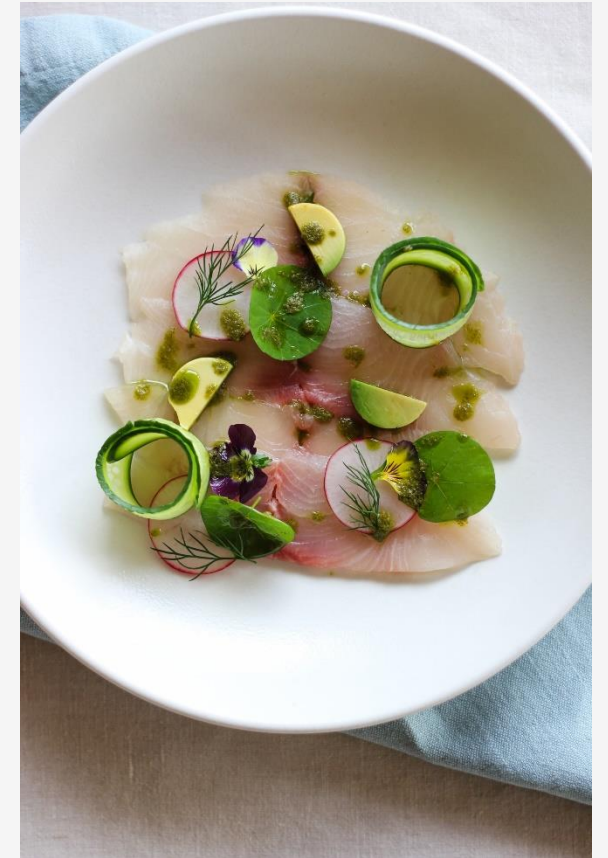
The Estate is a true escape full of wonderful amenities. The beautiful, rural, yet accessible environment will have you feeling rested and invigorated from the moment you enter our grounds. Take a stroll along our 5km walking track, enjoy the swimming pool with heated spa, work out in the gym, shoot pool in the lounge or play a game of tennis on the courts.

Enjoy a glass of local wine in our stunning bar while staying in and sampling our Express Dining Menu. Available from 11.00am - 7.00pm Monday to Friday, it is perfect if you'd like to enjoy a quick lunch on the pool terrace or relaxed dinner in our bar, lounge or in your room.

With complimentary parking and Wi-Fi, the Estate is perfect for the corporate traveller.



# FOOD

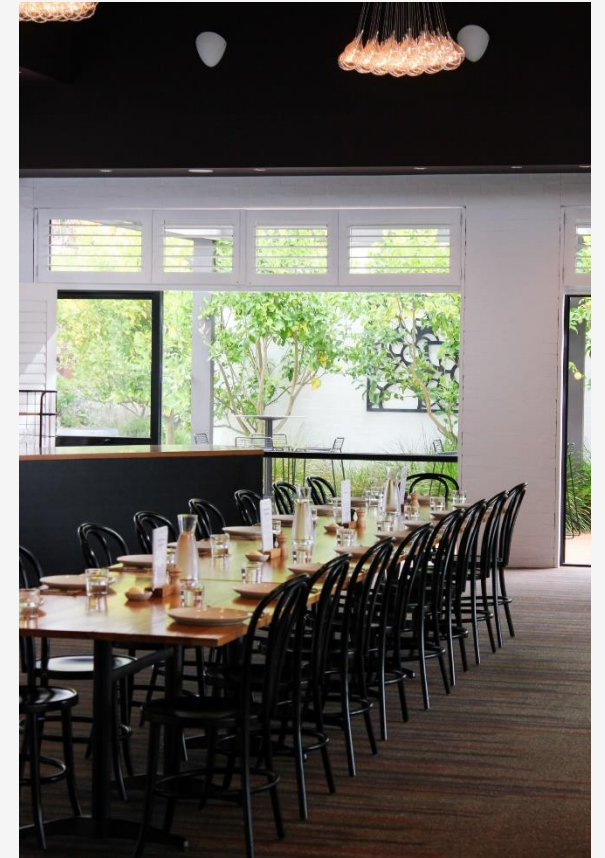


Great food and sustainability are part of what we do at the Estate, and we showcase this using local suppliers, seasonal ingredients and produce from our kitchen garden.

We pride ourselves on having a unique food culture that provides an escape from traditional conference food and promotes interaction between delegates. Our feasting and shared conference catering options will nourish and sustain them throughout the day.

Great coffee is essential to us at the Estate, and our packages feature one-touch espresso coffee and Love Tea available all day. Barista made coffee is also available to purchase.

# EVENTS



Waurn Ponds Estate specialises in corporate events and our talented chefs have created catering menus that go beyond traditional expectations. Using quality, local ingredients, our menus showcase the best of what the region has to offer.

The team can assist you with any event, including an afternoon tea in the kitchen garden, a sit down banquet in our restaurant, a cocktail party in the bar or grounds, feasting stations and of course, conferences.

We have a range of spaces to accommodate any event. The stunning Barrabool restaurant can cater for up to 100 seated guests or 200 cocktail, and our bar is perfect for smaller events.



# PREMIUM CONFERENCE PACKAGES

ALL PACKAGES INCLUDE ALL DAY  
LOVE TEA + BLEND CO COFFEE



## HALF DAY PACKAGE

Morning tea OR Afternoon Tea

One savoury per person

One sweet per person

Light lunch

Sandwich of the day

Shared salad selection

## FULL DAY PACKAGE

Morning tea

One savoury per person

One sweet per person

Light lunch

Sandwich of the day

Shared salad selection

Afternoon Tea

One sweet per person

# DELUXE CONFERENCE PACKAGES

ALL PACKAGES INCLUDE ALL DAY  
LOVE TEA + BLEND CO COFFEE



## HALF DAY PACKAGE

Morning tea OR Afternoon tea

One savoury per person

One sweet per person

Shared lunch

Bread + butter

One hot main selection

Two sides + salads of the day

## FULL DAY PACKAGE

Morning tea

One savoury per person

One sweet per person

Shared lunch

Bread + butter

One hot main selection

Two sides + salads of the day

Afternoon tea

One sweet per person



# SAMPLE MENU



## MORNING TEA

Zucchini bread, spring onion, feta, bacon

Florentine slice

## LUNCH

Warm ciabatta, cultured butter

Braised honey and garlic chicken with  
vegetable ragout

Roasted sweet potato and parsnip, with  
new season apples, basil and walnuts

Salad of cucumber, capsicum, red onion,  
tomatoes and olives

## AFTERNOON TEA

Passionfruit yoyo

# FIND US



We are located on Deakin University's Waurn Ponds campus. From Pigdons Road, enter Alfred Deakin Drive (Entrance 1) and turn left onto Nicol Drive South. Follow this road and then turn right at our sign which says Waurn Ponds Estate.



# WAURN PONDS ESTATE

CONFERENCES | EVENTS | ACCOMMODATION



## CONTACT US

Waurn Ponds Estate | Nicol Drive South, Waurn Ponds  
T 03 5227 3000 | E [waurnpodsestate@deakin.edu.au](mailto:waurnpodsestate@deakin.edu.au) | W [waurnpodsestate.com.au](http://waurnpodsestate.com.au)